



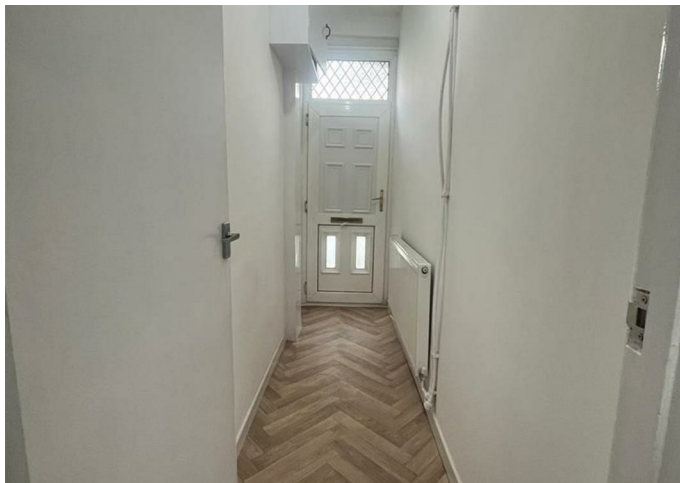
House

42 DOWNING STREET, NEWPORT, NP19 0JJ

£1,150

FEATURES

- 3 spacious bedrooms
- Cosy reception room
- Located on Downing Street
- Easy access to transport
- 1 modern bathroom
- Charming house style
- Close to Newport amenities
- Ideal for families



HarveyBowes
— REAL ESTATE —

3 Bedroom House located in Newport

Call us on
01633 740990

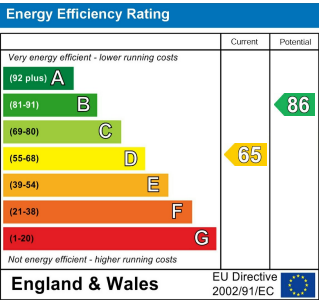
Nestled in the heart of Newport, this charming house on Downing Street offers a delightful blend of comfort and convenience. With three well-proportioned bedrooms, this property is perfect for families or those seeking extra space for guests or a home office. The Double reception room provides a warm and inviting area for relaxation and entertaining, making it an ideal setting for both quiet evenings and lively gatherings.

The house features one bathroom, thoughtfully designed to cater to the needs of modern living. While the property does not specify its square footage, its layout is designed to maximise space and functionality, ensuring that every corner is utilised effectively.

Situated in a vibrant community, this home is within easy reach of local amenities, schools, and parks, making it an excellent choice for those who appreciate the convenience of urban living while still enjoying a sense of community. The surrounding area boasts a variety of shops, cafes, and recreational facilities, ensuring that all your daily needs are met.

This property presents a wonderful opportunity for anyone looking to settle in Newport, offering a comfortable and practical living space in a desirable location. Whether you are a renter or seeking a new family home, this house on Downing Street is certainly worth considering.

Council Tax Band
B



Agents Note: Whilst every care has been taken to prepare these particulars, they are for guidance purposes only. All measurements are approximate and are for general guidance purposes only and whilst every care has been taken to ensure their accuracy, they should not be relied upon and potential buyers are advised to recheck the measurements.

